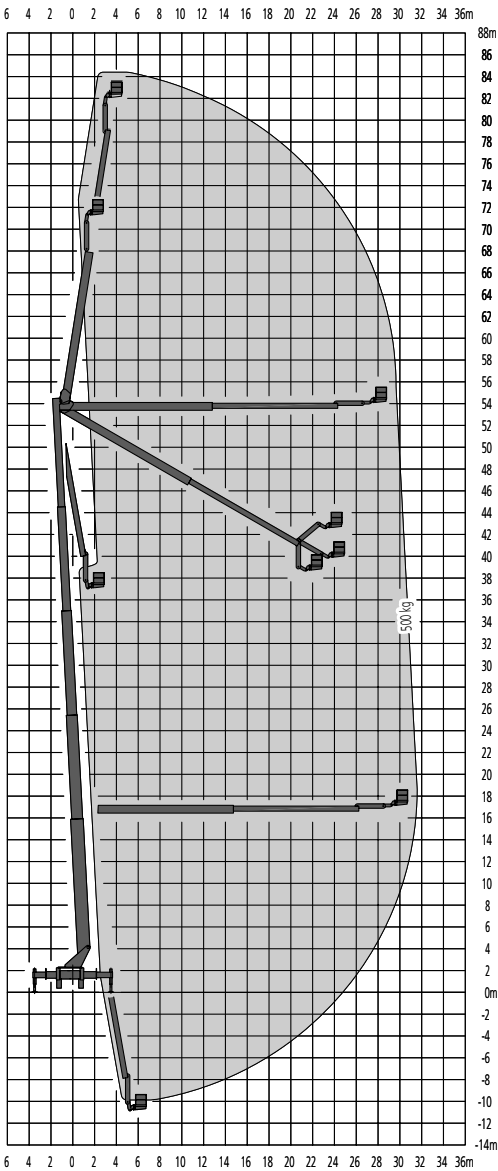


RUTHMANNSTEIGER®	TTS 840
Working height	84,40 m
Platform height	82,40 m
Lateral outreach to either side	31,50 / 32,00 m
Range of rotation	2 x 225°
Swivelling angle of Rüssels®	160°
Size of working cage	2,00 x 1,00 m
Enlarge to	3,50 x 1,00 m
Range of rotation	2 x 50°
Carrying capacity of working cage	320 / 500 kg
Telescopic extension lower/upper boom	37,00 / 11,00 m
Siting inaccuracy	0°
Overall height	4,00 m
Jacked width	7,60 m
(Outer edge of jack plate)	

Steiger®, Gelenksteiger® and Rüssel® are registered trademarks of the Anton Ruthmann GmbH & Co. KG



Technical alternations reserved (8/02)



Specials:

- ✈ Fast working movements due to a generous dimensioned hydraulic system
- ✈ Construction allows uncomplicated servicing
- ✈ High grade in stability due to fine grain steel
- ✈ Central lubrication of the Projecting system
- ✈ High lifting capacity of jacks
- ✈ Electric, water and air connections on the platform
- ✈ Automatic return to entering position
- ✈ Emergency drive through Hatz diesel aggregate
- ✈ Memory position
A position can be stored and automatically recalled

If wished a TV cable can be installed in the telescope projector.

Anton Ruthmann GmbH Co. & KG
 Von-Braun-Straße 4
 48712 Gescher-Hochmoor, Germany
 Phone: 0 28 63/204-0
 Fax: 0 28 63/204-212
 Internet: www.ruthmann.de
 eMail: vertrieb@ruthmann.de



RUTHMANNSTEIGER® TTS 840



RuthmannSteiger TTS 840 - the match winner

Filming sport events such as tennis and football tournaments from a sufficient height and from the right position, sending the spectators at home live situations to their screens?

The best way to achieve this is at an adequate height having the options to film as much as possible from as many different perspectives as possible.

1st Serve Ruthmann: constructed with the proven principles of the world record holder TTS 1000, the Steiger® TTS 840 makes resolving these tasks playfully easy. With a working height of 84,40 meters and 32 meter lateral outreach, this unit possesses a phenomenal area of utilisation.

Game-Ruthmann: The unit is automatically erected by the use of only two buttons – therefore saving much time. The entrance to the cage is easy and great heights can be safely and comfortably reached, thanks to the jolt free running characteristic of this Steiger®

Set-Ruthmann: The working cage has an extreme high carrying capacity of 500 kg giving man and equipment sufficient space. If so wished, the cage can be varied in size from 2.00 x 1.00 m to 3.5 x 1.00 m according to the individual necessities of each and every customer.

Match point-Ruthmann: With a swivelling capacity of 2 x 225° the Steiger® TTS 840 has the ability to reach almost targeted positions. An additional plus: Because of a 160° swivelling Rüssel® (articulated top boom) this unit can be operated in extremely difficult accessible areas and obstacles can be playfully overcome.

Thanks to an overall weight of mere 48 tons an escort vehicle is not necessary. Due to its precise controlling, an extraordinary high grade of safety and comfort is to be experienced, at great heights and even by winds gale force 6.

All these characteristics make this Steiger® unbeatable in its class.

The areas of utilisation for the Steiger® TTS 840 are, of course, far more extensive. For instance: Repair and service work on buildings, industrial plants, telecommunication and wind power plants etc.

RUTHMANNSTEIGER® TTS 840

- Working height 84,40 m
- Lateral outreach 31,50 / 32,00 m
- Cage carrying capacity 320 / 500 kg
- Support width 7,60 m
- Permitted overall weight 48 t

➔ Safety:

- A very high standard of safety is reached, due to the great stability of this unit
- Operational safety due to interior lying cables

➔ Erecting automatic:

- Automatic unit levelling to 0° and subsequent cage positioning for entrance.



➔ 1st class running characteristics:

- gentle motion start, jolt free movements, cushioned stopping through the precise RUTHMANNControlsystem
- exact positioning at the place of utilisation
- Cushioning of final movements

➔ Enormous utilisation possibilities through articulating telescopic construction:

- Additional support in vehicle profile possible

➔ Working cage:

- Spacious cage with generous entrance
- Cage can be extended to 3.5 x 1 m (Standard)
- Hydro static platform levelling

➔ Rüssel®:

- Additional flexibility in restricted areas is reach due to a Rüssel (articulated top boom) swivelling angle of 160°